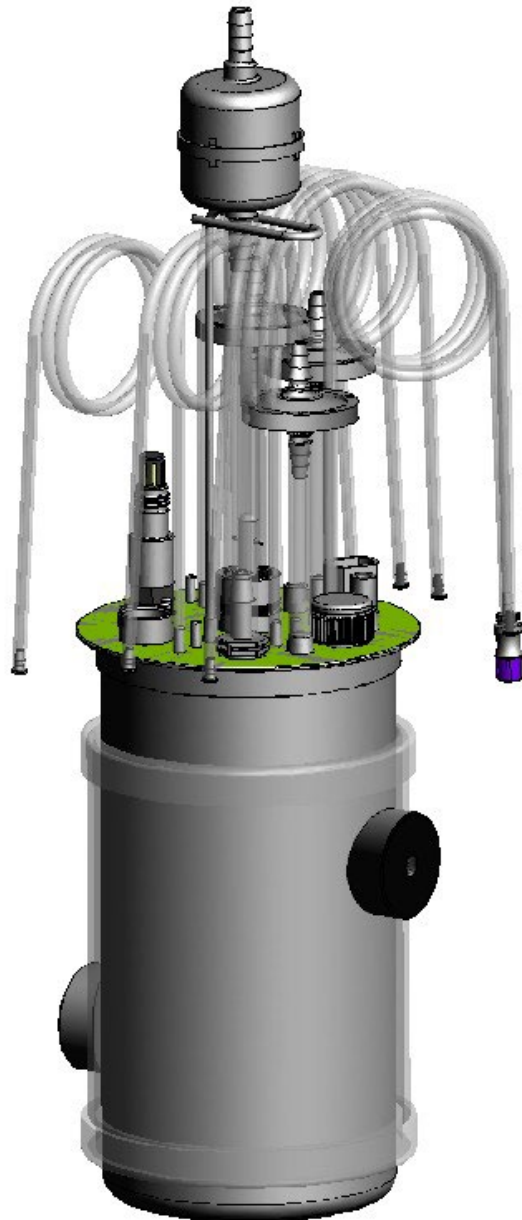


Product code: 33-0330-VP-SUJ-HPD-v1

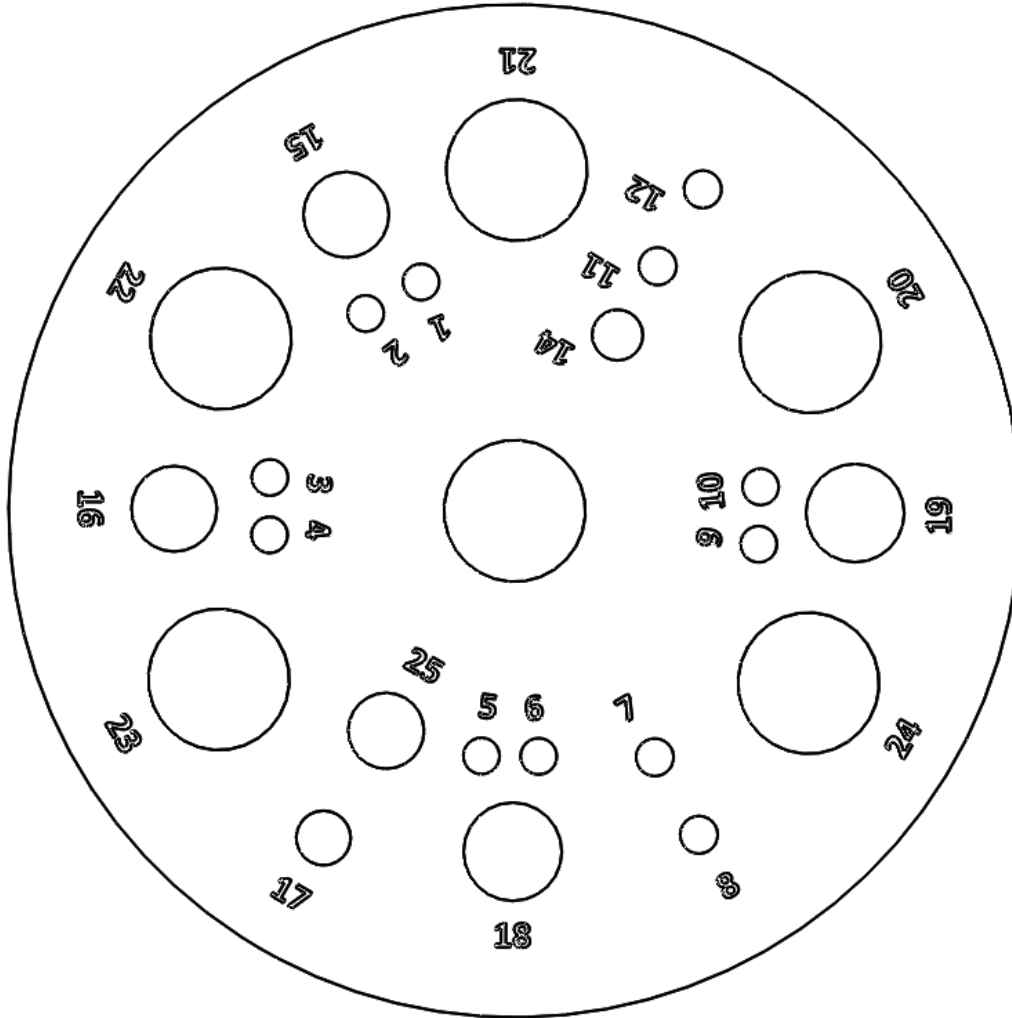
Revision 1.0

Customer name and address	
Date of contact	
Number of SUB's	
Time of delivery, week from order	
Configurator Version 1.1	
Order number	



Dokumentnummer:	Emne:				
K08.2.3.1.3	Produktionsordre formular – Ø137 Vessel				
Version:	Redaktør:	Dokumentansvarlig:	Godkendt af:	Godkendt (dato):	Side:
2	SH	KK	PS	2026-04-12	1

Top plate layout



Dokumentnummer:	Emne:				
K08.2.3.1.3	Produktionsordre formular – Ø137 Vessel				
Version:	Redaktør:	Dokumentansvarlig:	Godkendt af:	Godkendt (dato):	Side:
2	SH	KK	PS	2026-04-12	2

Basic vessel size

Diameter	Ø 137 mm (outer diameter)
Model	225
Vessel volume	3.2 liters

Port description

Port No.	Name	Description	Internal	External
1	Headspace feed line	ID 3 mm barb	N/A.	OD6.4 x ID3.2 x 900 mm weldable hose closed with plug. (PIP230)
2	Sample line	ID 3 mm barb	OD6 x ID3 mm silicone hose set at 70 mm from the bottom.	OD6 x ID3 x 300 mm silicone hose with swabable valve
3	Harvest line	ID 3 mm barb	OD9 x ID6 mm silicone hose to the bottom with a "V"-cut.	OD9.5 x ID6.4 x 900 mm weldable hose closed with plug. (PIP230)
4	Prelevement	ID 3 mm barb	OD6 x ID3 mm silicone hose set at 50 mm from the bottom.	OD6.4 x ID3.2 x 900 mm weldable hose with a female luer-lock (FTLL230) and swabable valve.
5	Headspace feed line	ID 3 mm barb	N/A.	OD6.4 x ID3.2 x 900 mm weldable hose closed with plug. (PIP230)
6	Headspace feed line	ID 3 mm barb	N/A.	OD6.4 x ID3.2 x 900 mm weldable hose closed with plug. (PIP230)
7	Headspace feed line	ID 3 mm barb	N/A.	OD6.4 x ID3.2 x 900 mm weldable hose closed with plug. (PIP230)
8	Not in use	ID 3 mm barb	Closed with UV-Glue.	N/A.
9	Not in use	ID 3 mm barb	Closed with UV-Glue.	N/A.
10	Not in use	ID 3 mm barb	Closed with UV-Glue.	N/A.
11	Not in use	ID 3 mm barb	Closed with UV-Glue.	N/A.

Dokumentnummer:	Emne:				
K08.2.3.1.3	Produktionsordre formular – Ø137 Vessel				
Version:	Redaktør:	Dokumentansvarlig:	Godkendt af:	Godkendt (dato):	Side:
2	SH	KK	PS	2026-04-12	3

Port No.	Name	Description	Internal	External
12	Headspace Acid/Base line	ID 3 mm barb	N/A.	OD6.4 x ID3.2 x 900 mm weldable hose closed with plug. (PIP230)
13	Center port	PG13.5 port	Shaft for impeller.	HPD bearing.
14	Sky support barb	N/A.	N/A.	N/A.
15	Aeration 1 - Macro	ID7	OD10 x ID7 mm PC tube L-sparger with glass frit P40	OD14.3 x ID9.6 x 100 mm weldable hose with sterile filter OD50 (16cm ²)
16	Temp Well	ID7 mm	OD10 x ID7 mm PC tube.	OD12 x ID8 silicone hose to ensure sealing.
17	Headspace gas overlay	ID4 mm	N/A.	OD11.2 x ID6.4 x 100 mm weldable hose with sterile filter OD50. (16cm ²)
18	Aeration 2 - Micro	ID9 mm	Micro L-sparger with 10 µm pore glass frit	OD14.3 x ID9.6 x 100 mm weldable hose with sterile filter OD50. (16cm ²)
19	N/A.	ID9 mm	Closed with plug.	N/A.
20	VisiWell	PG13.5 port	VisiWell for Hamilton VisiFerm sensor OD12x225	Built-in VisiWell sleeve for Hamilton VisiFerm DO sensor
21	Exhaust	PG13.5 port	N/A.	OD15.9 x ID9.6 x 200 mm weldable hose, sterile capsule filter. (400 cm ²)
22	Perfusion	Custom ID19 port	Designed to accommodate CellRetention-3-kit-x / pn-33-80C112-A	Special plug + o-ring.
23	PAT	PG13.5 port	N/A.	Plug + O-ring.
24	OneFerm pH	PG13.5 port	OneFerm pH sensor model OD12x225	Hamilton pH, connection VP temperature PT100
25	Ground port for SS rod	ID 2.5	N/A. (not installed)	For banana-plug.

Dokumentnummer:	Emne:				
K08.2.3.1.3	Produktionsordre formular – Ø137 Vessel				
Version:	Redaktør:	Dokumentansvarlig:	Godkendt af:	Godkendt (dato):	Side:
2	SH	KK	PS	2026-04-12	4

Impeller

Number impeller (from the bottom)	Type of impeller	Diameter of impeller (mm)	Number of blades	Angle (°)	Distance from bottom/lower impeller (mm)
1	Kidney	55	3	45	55

- Clockwise rotation, down flow, without baffles.

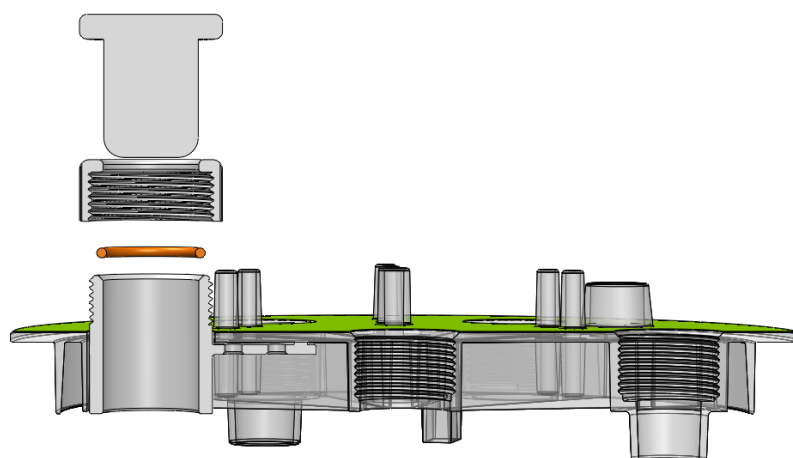
Additional information

Single-Use-Jacket (SUJ)

Single-Use-Jacket details

- In/outlet both with G3/8 female threading.
- Top Inlet placed in front of port #1.
- Placed 20 mm +/- 5 mm from the bottom (measure on the external bottom)
- Inlet / outlet arranged opposite of each other on wall

Perfusion (Port22)



Designed and manufactured by

PerfuseCell-Cronus-PCS A/S

Noerrelundvej 10, DK-2730 Herlev, Denmark

www.perfusecell.com

Dokumentnummer: K08.2.3.1.3	Emne: Produktionsordre formular – Ø137 Vessel				
Version: 2	Redaktør: SH	Dokumentansvarlig: KK	Godkendt af: PS	Godkendt (dato): 2026-04-12	Side: 5